

M063.0 DN700CV Cantilever Weld Assembly Replacement

1/21/04

Models Affected: DN700CV

Reason: To increase the latch engagement of the tray assembly to the cantilever.

Order: 801,305,06x.x3 Weld Assembly Cantilever

Tools required: 7/16" socket wrench 7/16" open end wrench (adjustable wrench)
Phillips screw driver needle nose pliers

Installation instructions:

1. Remove the tray assemblies from the vender.
2. Remove the screw securing the cantilever brace to the under side of one of the left side cantilever weldments. See Figure 1.
3. Remove the external retaining ring from the left side cantilever retainer pin. See Figure 2.
4. While holding the cantilever weldment, remove the cantilever retainer pin. See Figure 3.
5. Remove the cantilever weldment from the vender.
6. Remove the 3 rollers from the cantilever weldment. See Figure 3.
7. Install rollers removed in step 6 on one of the new cantilever weldments.
8. Using the screw removed in step 2, pre thread the hole in the cantilever weldment used to secure the cantilever brace. See Figure 1.
9. Install the cantilever weldment to the support post and secure with the cantilever retainer pin. See Figure 3.
10. Install the external retaining ring removed in step 3. See Figure 2.
11. Secure the cantilever brace to the new cantilever weldment using the screw removed in step 2. See Figure 1.
12. Repeat these steps until all 5 left side cantilever weldments have been replaced.

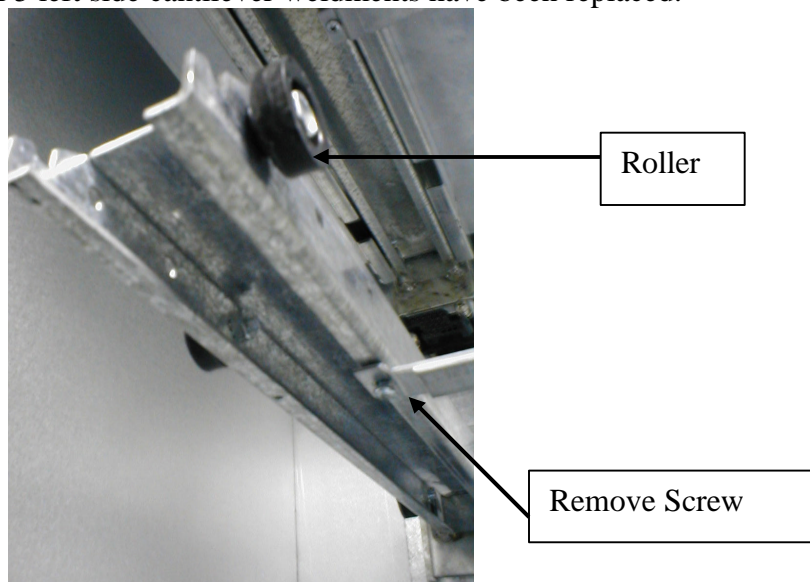
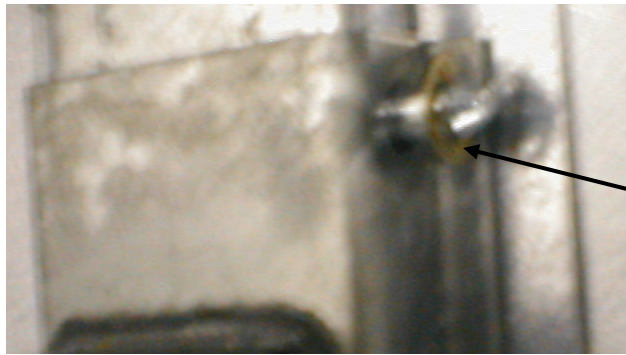


Figure 1



Remove external retaining ring.

Figure 2



Remove cantilever retainer pin.

Figure 3

